

Solver: compressibleInterFoam

```
object T;
}
// * * * * *
dimensions [0 0 0 1 0 0 0];
internalField uniform 300;
boundaryField
{
  Wall
  {
    type fixedValue;
    value uniform 294;
  }
}
```

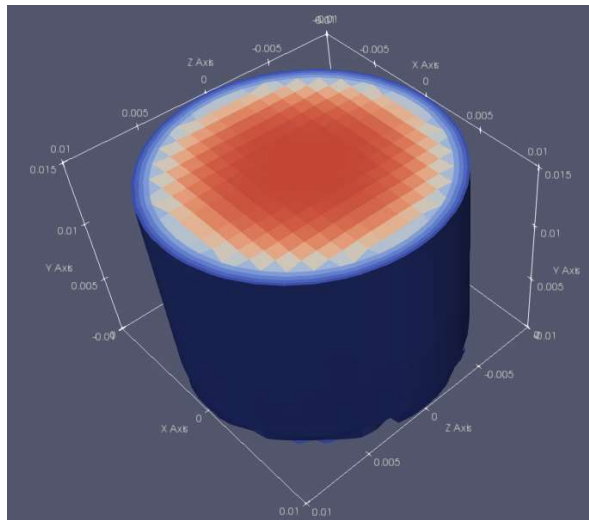
Starting point: tutorial compressibleInterFoam/depthCharge2D

In Openfoam5: correct behaviour

In openfoam-dev: no temperature decrease

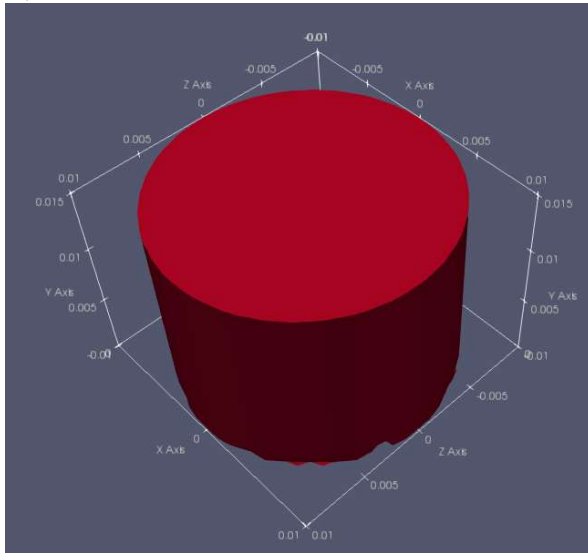
Both cases with exactly the same setup/BC/fvSolution/fvSchemes...

OpenFOAM v5.x (Build : 5.0-dbb428a3a855):



Temperature Plot | Simulation Time 0.1s

Openfoam-dev (dev-5d4c8f5d5f50):



Temperature Plot | Simulation Time 0.1s

